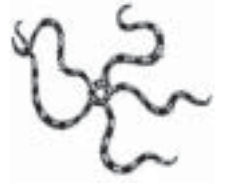


## Program Information

# Kelp Connections

Grade 4



## How can I prepare my classroom for the program?

- ▼ Provide a comfortable area for all students to sit on the floor in a circle.
- ▼ Provide one 8-foot area of cleared table space.
- ▼ Provide a dry-erase board, blackboard, or paper flip chart with appropriate writing implements.
- ▼ Have payment ready for our instructor.

## How can I prepare my students for the program?

- ▼ Please make sure students wear nametags.
- ▼ Use the Kelp Connections Curriculum Guide for pre- and post-visit activities (download from [www.sbnature.org](http://www.sbnature.org)).

## What will my class be doing?

- ▼ Classes are scheduled for a 1-hour block of time, which includes a 10-minute set-up, a 45-minute instructional program, and a 5-minute clean-up.
- ▼ Students will:
  - compare food chains with food webs.
  - discover inhabitants of our local kelp forests by examining their food web.
  - contrast how energy and toxins move through food webs.
  - discuss factors that affect the health and stability of ocean ecosystems.



## How does this program correlate with California State Standards?

- ▼ Meets State Standards for Grade 4. See back for complete details.

**For more information, please contact the WoW Program Coordinator at 682-4711 ext. 363.**



Waves on Wheels is a program of the Santa Barbara Museum of Natural History in partnership with the Channel Islands National Marine Sanctuary.

## Program Information

# Kelp Connections

Grade 4

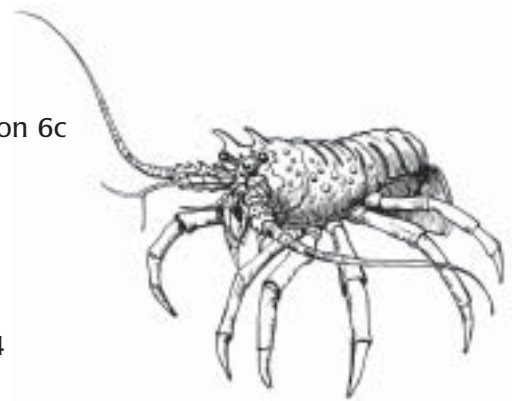
## How does this program correlate with California State Standards?

The following standards will be addressed by our program:

- ▼ **Science:**  
Life Sciences 2, 3a
- ▼ **Language Arts:**  
Reading 1.1, 1.2, 1.3, 1.4  
Listening and Speaking 1.1

The following standards will be addressed by using the activities in the Curriculum Guide:

- ▼ **Science:**  
Earth Sciences 5c  
Investigation and Experimentation 6c
- ▼ **Language Arts:**  
Listening and Speaking 1.2
- ▼ **Math:**  
Measurement and Geometry 3.4



Waves on Wheels is a program of the Santa Barbara Museum of Natural History in partnership with the Channel Islands National Marine Sanctuary.