

2025-26 Field Trip Registration Guide: Mondays

This tutorial is specifically for classes booking on Mondays, which is when we offer our two-hour longform programs for ONE 5th-12th grade class of 30 students or less.

PREPARING

We strongly recommend that you visit our Museum Field Trip menu to determine which programs work best for your class *prior* to registering and work closely with your school calendar so you can have multiple dates ready if your first choice is already taken.

When you're ready to register, you can access the registration website on our landing page, field trip menu, and FAQ page through the link in the sidebar.



Schools & Teachers

The Santa Barbara Museum of Natural History offers experiential, Next Generation Science Standards (NGSS)-aligned school programs for elementary, middle school, and high school classes. The Sea Center on Stearns Wharf is offering self-guided school visits of our interactive exhibits for school groups. We're excited to welcome you and your students to the Museum and Sea Center this school year!

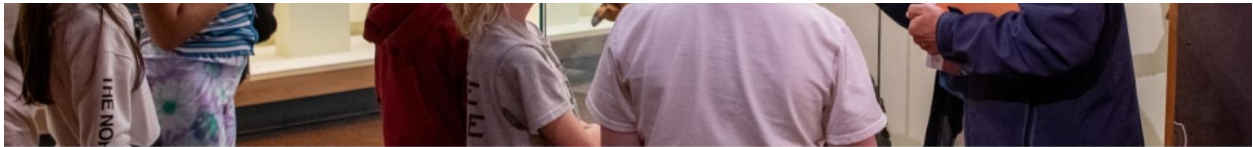
Registration will open on Wednesday, August 27 at 3:00 PM for fall school field trips September 22–December 19, 2025.

Explore [Museum Field Trips](#) and read [Museum Field Trip FAQ](#).



[Register Here](#)

[Schools and Teachers landing page](#)



Field Trips at the Museum

- **Registration for Fall 2025** opens Wednesday, August 27, 2025 at 3:00 PM
(For visits Sep. 22–Dec. 19, 2025)
- **Registration for Winter/Spring 2026** opens Wednesday, November 5, 2025 at 3:00 PM
(For visits January 7–March 27, 2026)
- **Registration for Spring 2026** opens Wednesday, January 14, 2026 at 3:00 PM
(For visits April 6–May 22, 2026)



[Register Here](#)

[Field Trips at the Museum \(aka: the Field Trip Menu\)](#)



Museum Field Trip FAQ

Jump to a category from the links below. This information applies to the 2025–26 school year. For our sister campus on Stearns Wharf, see [Sea Center Field Trip FAQ](#).

- [Offerings and Capacity](#)
- [Booking and Payment](#)
- [Visit Logistics](#)



[Register Here](#)

[Museum Field Trip FAQ](#)

REGISTERING

Museum Field Trips



Museum Member? [Log in](#) Not a member? [Join Us](#) or [Checkout as a guest](#)



Fall Reservations open for: September 22 - December 19, 2025. Winter dates available November 5, 2025.

REGISTRATION OPENS AUGUST 27, 2025 AT 3:00 PM.

At the Museum | Mondays, Wednesday, Thursdays, and Fridays.

Start Here: We encourage you to determine which programs and dates are best for your class prior to attempting to register. **Only one (1) class can be booked at a time.**

[Registration Website](#)

WHAT YOU'LL NEED

We strongly recommend that you visit our Museum Field Trip menu to determine which programs work best for your class *prior* to registering and work closely with your school calendar so you can have multiple dates ready if your first choice is already taken.

There are two programming options available on alternating Mondays:

- Astrono-Monday: From Dust to Planets a program focusing on the formation of the universe and the forces that hold it together.
- Be the Change, an environmental science program on the importance of community science in environmental justice.

Make sure to check that the program *and* the date you want line up.

Monday programs are only for 5th-12th grades and occur on alternating weeks.

Choose either of our 2-hour programs:

AstronoMonday (5th-12th grade)

Offered: September 29, October 13, November 3, 17, and December 1, 15.

Environmental Conservation (5th-12th grade)

Offered: October 6, 27, November 10, and December 8.

Example of Monday program availability during the fall release.

In order to register, you'll need:

- A credit card for payment
- A list of preferred dates for your field trip (ALWAYS CHECK YOUR SCHOOL CALENDAR TO MAKE SURE THESE WORK FOR YOU FIRST)
- The preferred programming option for your class
- The full name of the teacher, their email address, and their cell phone number, in case we need to contact them while they're on campus.

- The number of students in the class, their grade, and whether they need any extra support during your visit.
 - o If you teach a combination class, select the lowest grade and write the additional grade(s) in the “questions or comments” section at the end of the survey.

School County

What county is your school located in?

test

Grade Level

If you have more than one grade level attending, please let us know in the comments.

9th

Number of Students

30 is the maximum capacity - if you have more, please make another reservation

27

Do your students need extra support? (optional)

Please provide details of any physical, mental, or emotional conditions that we can help support during the program.

N/A

Would you allow photos and/or videos to be taken of your students by the Museum during your visit?

If yes, we will follow up and ask for Photo Release Forms to be completed prior to your visit.

☐ Yes

☒ No

Do you have any questions or comments? (optional)

Please let us know.

9th-12th environmental class

[← Back](#)

Add 1 ticket to cart

Example of a reservation for a combination class.

- o “Number of adults” refers to the number of *parent chaperones* on your trip—excluding any teacher, student teachers, aides, or other faculty that are coming with the class.

- How you plan to arrive to the Museum.
- Whether the class will eat lunch on-site before returning to school.
 - o Lunch is 12:00 to 1:00 PM in our designated lunch space in the Prehistoric Forest, after all programs are finished.
- If it's okay to take pictures of the students for Museum materials.
 - o If you select "yes," we will send you photo release forms to be signed by your students' parents.


If you have any questions or additional comments to make, you can enter them in the designated field.

CHECKOUT


Once all survey responses are filled, you may check out.

If you are a Title I school, you can enter the Promo Code in the cart in the sidebar where it says **Apply a promo code** (in red) with the code: **title1discount** (not case sensitive) - this will automatically apply the 50% discount for Title I schools.

What other experiences would you like to add?



Museum Member? [Log in](#) Not a member? [Join Us](#) or Checkout as a guest



Museum Admission


2559 Puesta del Sol Santa Barbara, CA 93105
805-682-4711


Open Daily, 10:00 AM–5:00 PM

Founded in 1916 as the Museum of Comparative Oology, the Santa Barbara Museum of Natural History has evolved to include more than 3.5 million specimens covering every aspect of natural history.

Select

Your cart

 Your cart will expire in 14:32 min



Museum Field Trips
Mon, Oct 6, 2025 at 10:00 AM

1 ×

Environmental Conservation
(5th-12th Grade)

\$150.00

Apply a promo code

Enter a promo code

Apply

Subtotal

\$150.00

Discounts

- \$75.00

Title 1 Discount-Field Trips

Cart total

\$75.00

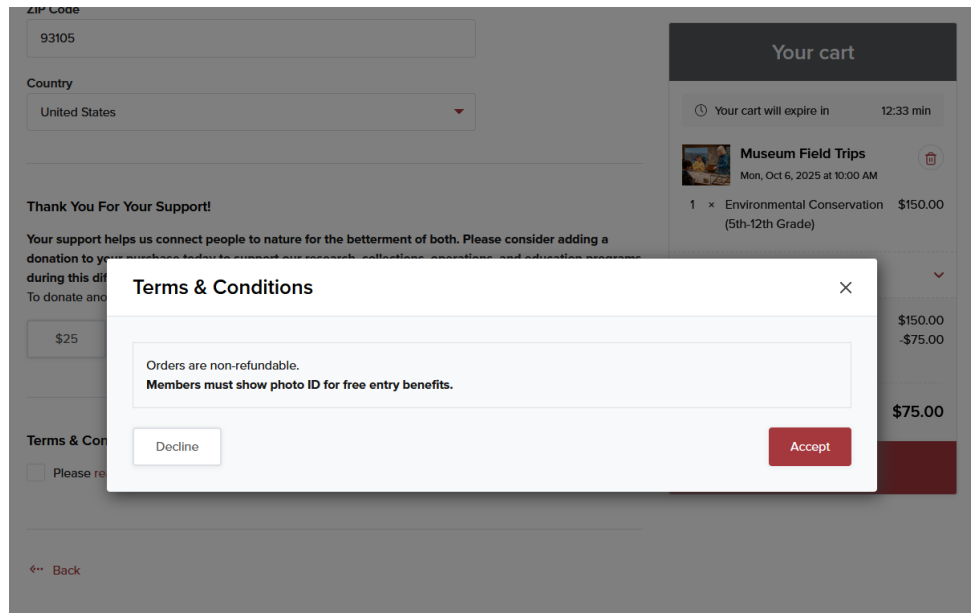
Proceed to checkout

Example of an order with the Title I discount applied.

****PLEASE NOTE: We verify Title I status through state data.**

Our online service only takes credit card. If you must pay by check, you must contact the School Programs team over the phone at 805-682-4711 ext. 168.

There is a “terms and conditions” pop-up regarding admission for members. *This does not apply to field trips, but you must click Accept to complete the order.*



Terms and Conditions pop-up.

CONGRATULATIONS

You're all booked! Look out for emails from orders@sbnature2.org for more information about your upcoming trip.

If you have further questions, please contact our team at bookings@sbnature2.org.