

2025-26 Field Trip Registration Guide: Wednesdays-Fridays

This tutorial is specifically for classes booking on Wednesdays, Thursdays, and Fridays, which is when we can serve up to three elementary-level class groups at a time.

PREPARING

We strongly recommend that you visit our Museum Field Trip menu to determine which programs work best for your class *prior* to registering and work closely with your school calendar so you can have multiple dates ready if your first choice is already taken.

When you're ready to register, you can access the registration website on our landing page, field trip menu, and FAQ page through the link in the sidebar.



Schools & Teachers

The Santa Barbara Museum of Natural History offers experiential, Next Generation Science Standards (NGSS)-aligned school programs for elementary, middle school, and high school classes. The Sea Center on Stearns Wharf is offering self-guided school visits of our interactive exhibits for school groups. We're excited to welcome you and your students to the Museum and Sea Center this school year!

Registration will open on Wednesday, August 27 at 3:00 PM for fall school field trips September 22–December 19, 2025.

Explore Museum Field Trips and read Museum Field Trip FAQ.



[Register Here](#)

[Schools and Teachers landing page](#)

**SANTA BARBARA
MUSEUM**
of
**NATURAL
HISTORY**



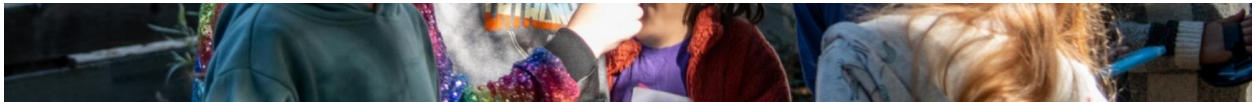
Field Trips at the Museum

- **Registration for Fall 2025** opens Wednesday, August 27, 2025 at 3:00 PM
(For visits Sep. 22–Dec.19, 2025)
- **Registration for Winter/Spring 2026** opens Wednesday, November 5, 2025 at 3:00 PM
(For visits January 7–March 27, 2026)
- **Registration for Spring 2026** opens Wednesday, January 14, 2026 at 3:00 PM
(For visits April 6–May 22, 2026)



[Register Here](#)

[Field Trips at the Museum \(aka: the Field Trip Menu\)](#)



Museum Field Trip FAQ

Jump to a category from the links below. This information applies to the 2025–26 school year. For our sister campus on Stearns Wharf, see [Sea Center Field Trip FAQ](#).

- [Offerings and Capacity](#)
- [Booking and Payment](#)
- [Visit Logistics](#)



[Register Here](#)

[Museum Field Trip FAQ](#)

REGISTERING



[Become a member](#) [Account login](#)

Museum Field Trips



Museum Member? [Log in](#) Not a member? [Join us](#) or checkout as guest

Your cart

You have no items in your cart.



Fall Reservations open for: September 22 - December 19, 2025

REGISTRATION OPENS AUGUST 27, 2025 AT 3:00 PM.

At the Museum | Mondays, Wednesday, Thursdays, and Fridays.

[Registration Website](#)

This is important: *If you're registering for multiple class groups, you cannot register all of them in the same order. You have to make separate orders for each one.*

There are four programming options available on Wednesdays, Thursdays, and Fridays:

- An Astronomy program and Museum Tour
- An Astronomy program and Backyard Adventure



- A Lab program and Museum Tour
- A Lab program and Backyard Adventure

First, you must select a date to start the booking process. We recommend having multiple dates that will work for your visit, in case your first choice is not available.

Select tickets

Select a date

Which day would you like to visit?

Wednesday, September 24

Thursday, September 25

Friday, September 26

Wednesday, October 1

Friday, October 3

Monday, October 6

Wednesday, October 8

Thursday, October 9

Show more dates

Date selection

Click the "Show more dates" button to access dates beyond those displayed.

Once you've selected the date for your visit, select the program option you want for your class.

Astronomy Program Options

This field trip includes two 45-minute programs (with a break in between) that will take place from 10 AM - Noon.

You will choose your astronomy program in the survey below once you select one of these options.

Astronomy Program & Museum Tour

\$150.00

Astronomy Program & Backyard Adventure

\$150.00

Lab/Class Options

This field trip includes two 45-minute programs (with a break in between) that will take place from 10 AM - Noon.

You will choose your lab in the survey below once you select one of these options.

Lab & Museum Tour

\$150.00

Lab & Backyard Adventure

\$150.00

[← Back](#)

[Add tickets to cart](#)

Program options

Once your program is selected, you'll need to fill out a survey with the following information:

- The program appropriate to your students' grade level.
- The full name of the teacher, their email address, and their cell phone number, in case we need to contact them with important information about their visit.

- The name, district, and county of your school.
- The number of students in the class, their grade, the number of adults accompanying you, and whether your students need any extra support during your visit.
 - o If you teach a combination class, select the lowest grade and write the additional grade(s) in the “questions or comments” section at the end of the survey.

School County

What county is your school located in?

test

Grade Level

If you have more than one grade level attending, please let us know in the comments.

1st

Number of Students

30 is the maximum capacity - if you have more, please make another reservation

25

Do your students need extra support? (optional)

Please provide details of any physical, mental, or emotional conditions that we can help support during the program.

N/A

Would you allow photos and/or videos to be taken of your students by the Museum during your visit?

If yes, we will follow up and ask for Photo Release Forms to be completed prior to your visit.

☒ Yes

☐ No

Do you have any questions or comments? (optional)

Please let us know.

1st and 2nd combo

[← Back](#)

Add 1 ticket to cart

Example of a reservation for a combination class.

- o “Number of adults” refers to the number of *parent chaperones* on your trip—excluding any teacher, student teachers, aides, or other faculty that are coming with the class.
- How you'll arrive at the Museum (bus, car, or walking)
- Whether the class will eat lunch on-site before returning to school.

- o Lunch is 12:00 to 1:00 PM in our designated lunch space in the Prehistoric Forest, after all programs are finished.
- If it's okay to take pictures of the students for Museum materials.
 - o If you select "yes," we will send you photo release forms to be signed by your students' parents.

If you have any questions or additional comments to make, you can enter them in the designated field.


CHECKOUT

Once all survey responses are filled, you may check out.

If you are a Title I school, you can enter the Promo Code in the cart in the sidebar where it says **Apply a promo code** (in red) with the code: **title1discount** (not case sensitive) - this will automatically apply the 50% discount for Title I schools.

What other experiences would you like to add?

Museum Member? [Log in](#) Not a member? [Join Us](#) or Checkout as a guest



Museum Admission


2559 Puesta del Sol Santa Barbara, CA 93105
805-682-4711


Open Daily, 10:00 AM–5:00 PM

Founded in 1916 as the Museum of Comparative Oology, the Santa Barbara Museum of Natural History has evolved to include more than 3.5 million specimens covering every aspect of natural history.

Select

Your cart

 Your cart will expire in 14:00 min



Museum Field Trips
Wed, Oct 1, 2025 at 10:00 AM

1 × Lab & Museum Tour \$150.00

Apply a promo code

Enter a promo code

Apply

Subtotal \$150.00

Discounts -\$75.00
Title 1 Discount-Field Trips

Cart total \$75.00

Proceed to checkout

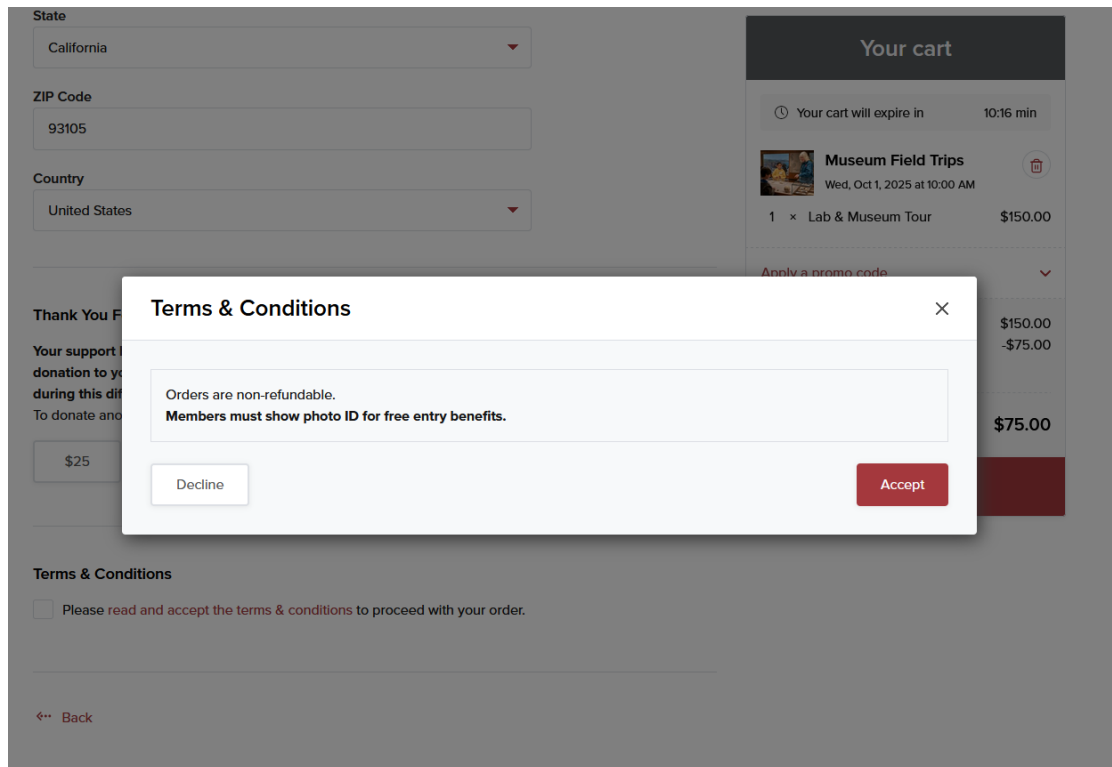
Example of an order with the Title I discount applied.

****PLEASE NOTE: We verify Title I status through state data.**

Our online service only takes credit card. If you must pay by check, you must contact the School Programs team over the phone at 805-682-4711 ext. 168.

SANTA BARBARA
MUSEUM
of
NATURAL
HISTORY

There is a “terms and conditions” pop-up regarding admission for members. *This does not apply to field trips, but you must click Accept to complete the order.*



Terms and Conditions pop-up.

CONGRATULATIONS

You're all booked! Look out for a confirmation email from orders@sbnature2.org for more information about your upcoming trip.

If you have further questions, please contact our team at bookings@sbnature2.org.